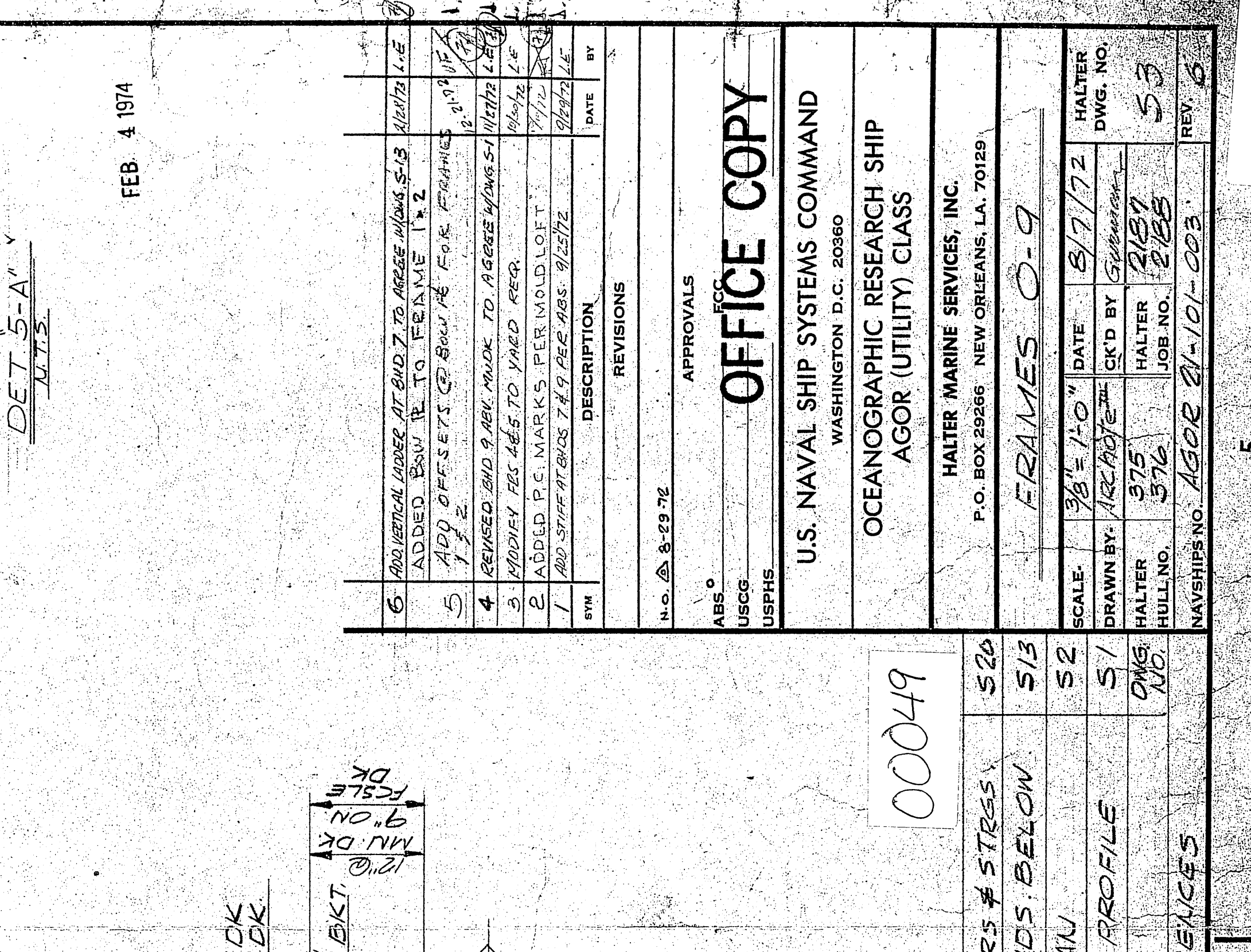
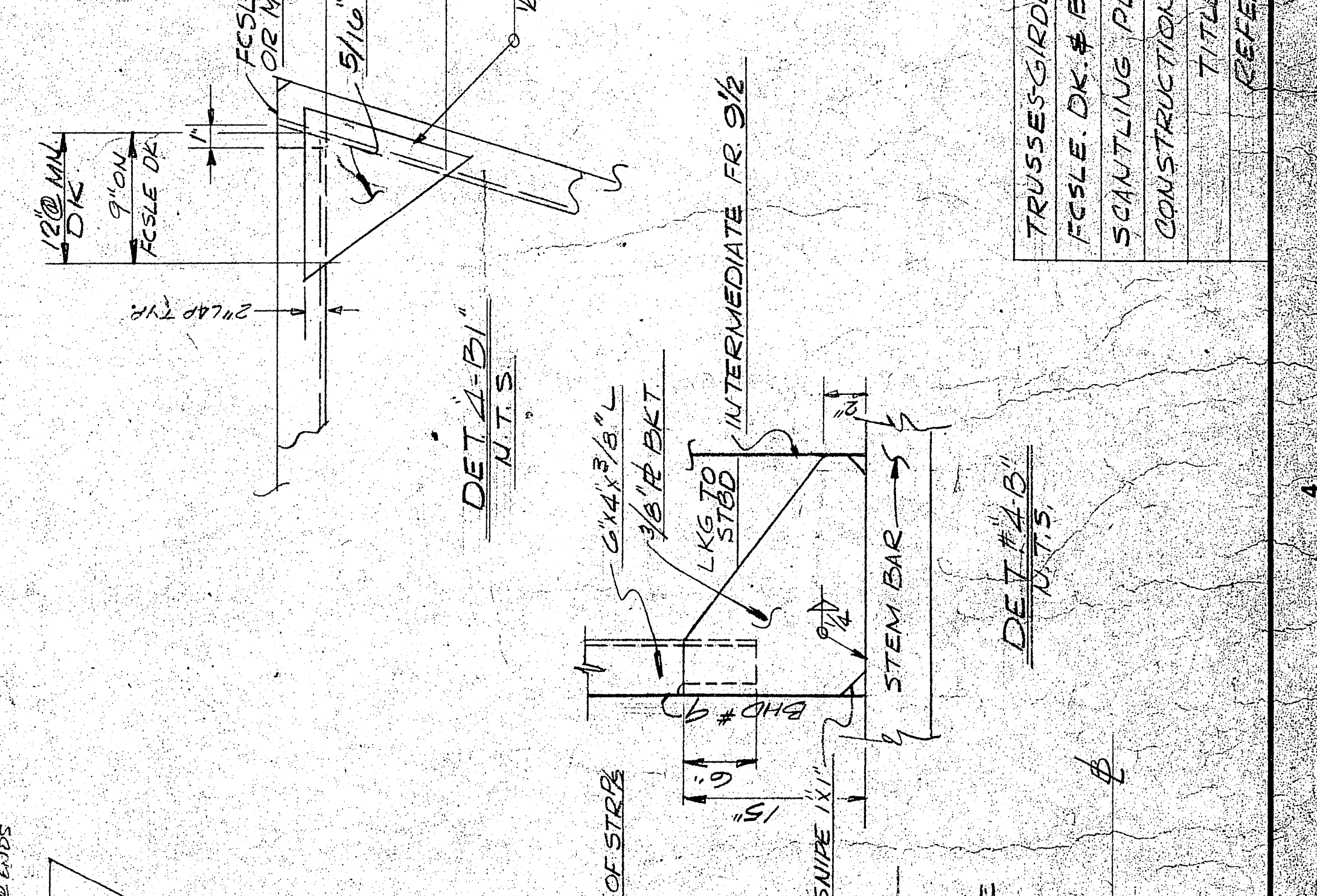
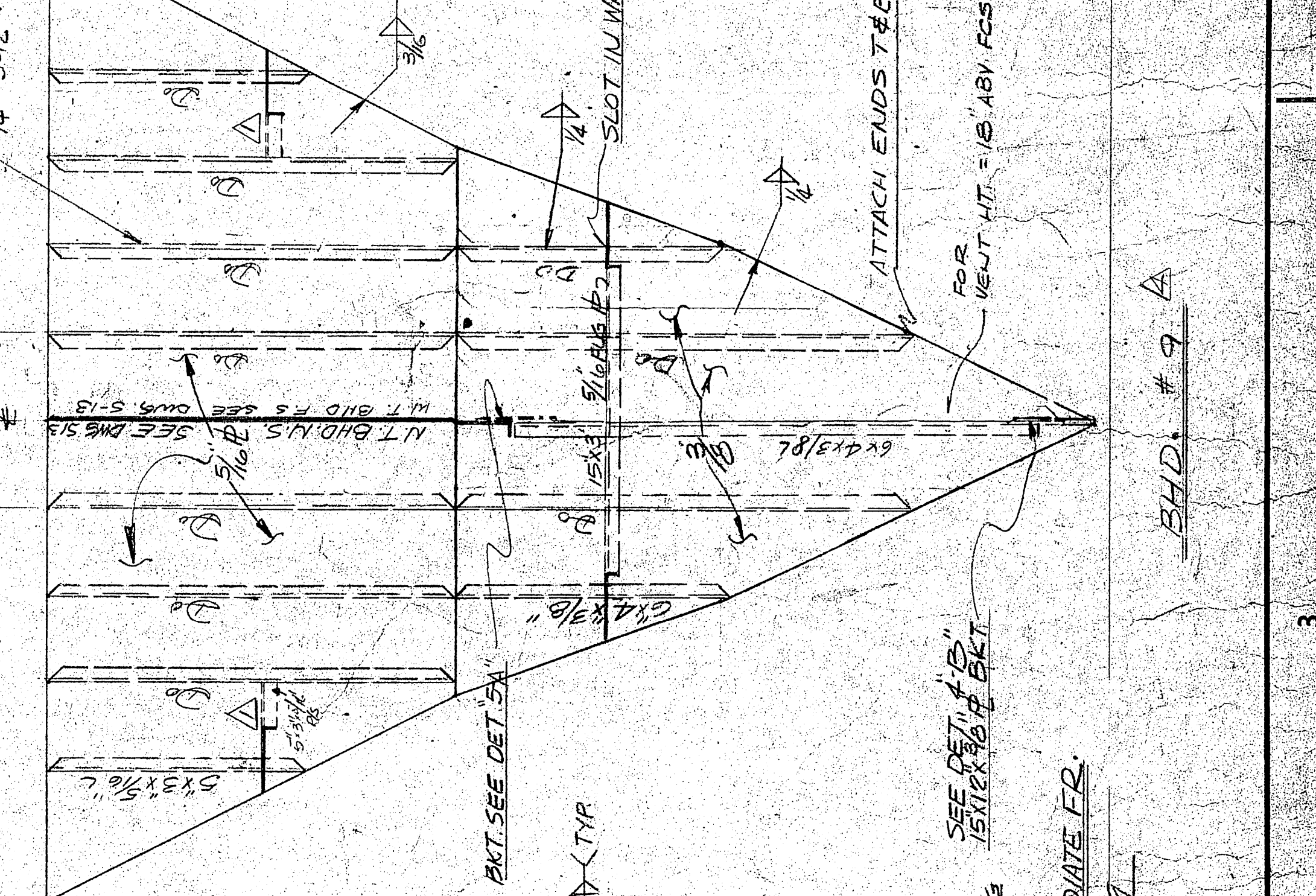
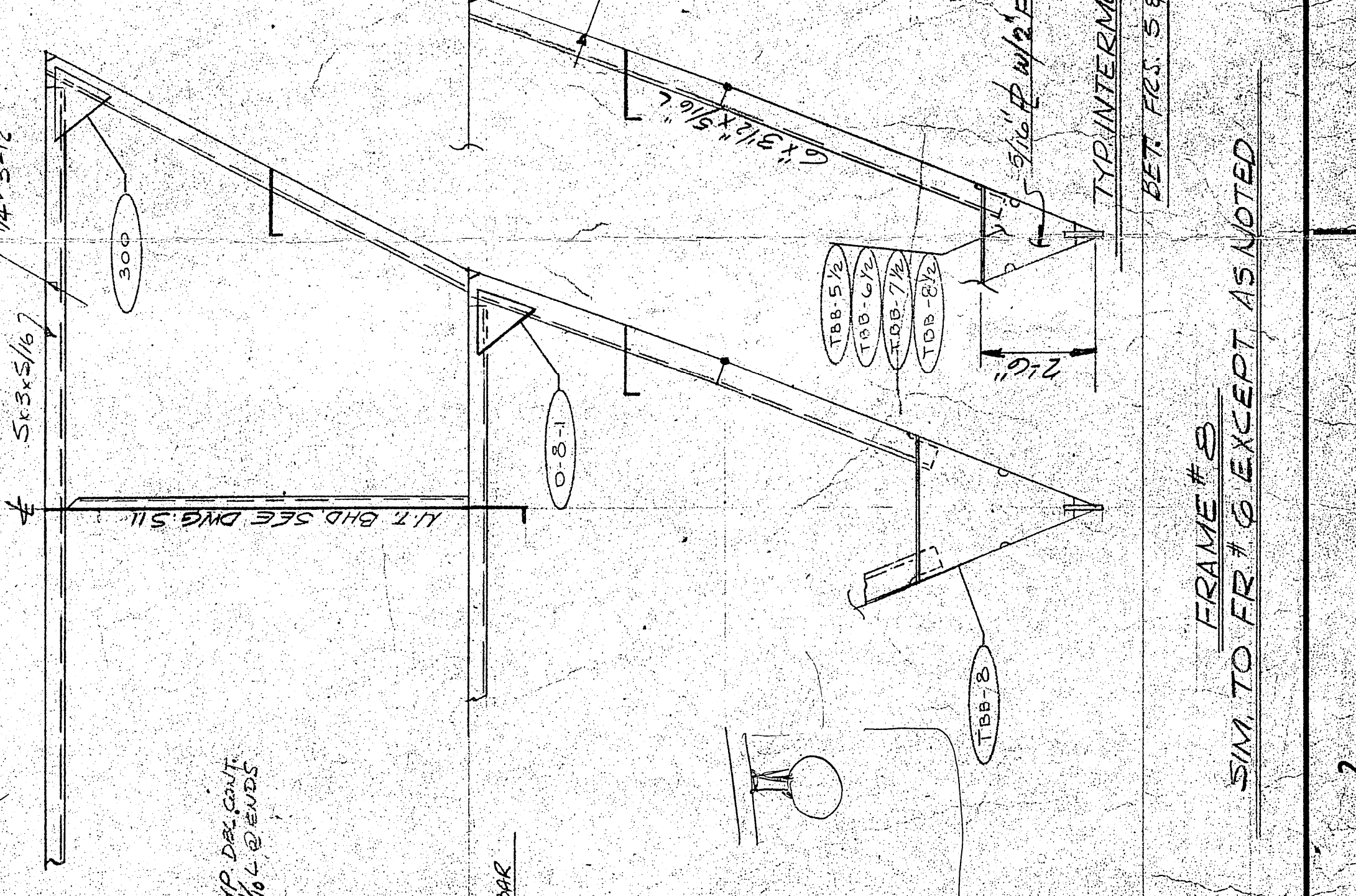
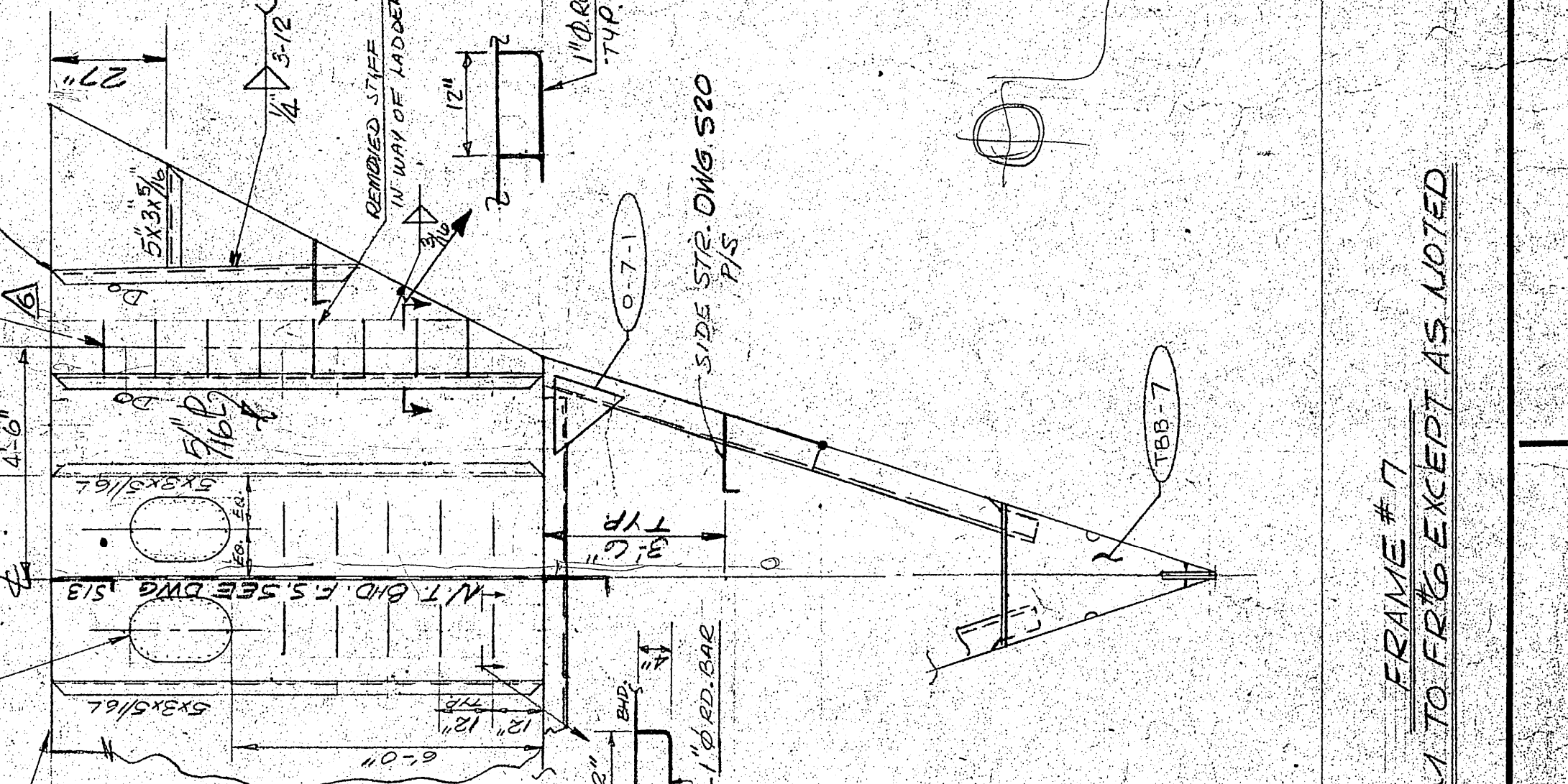
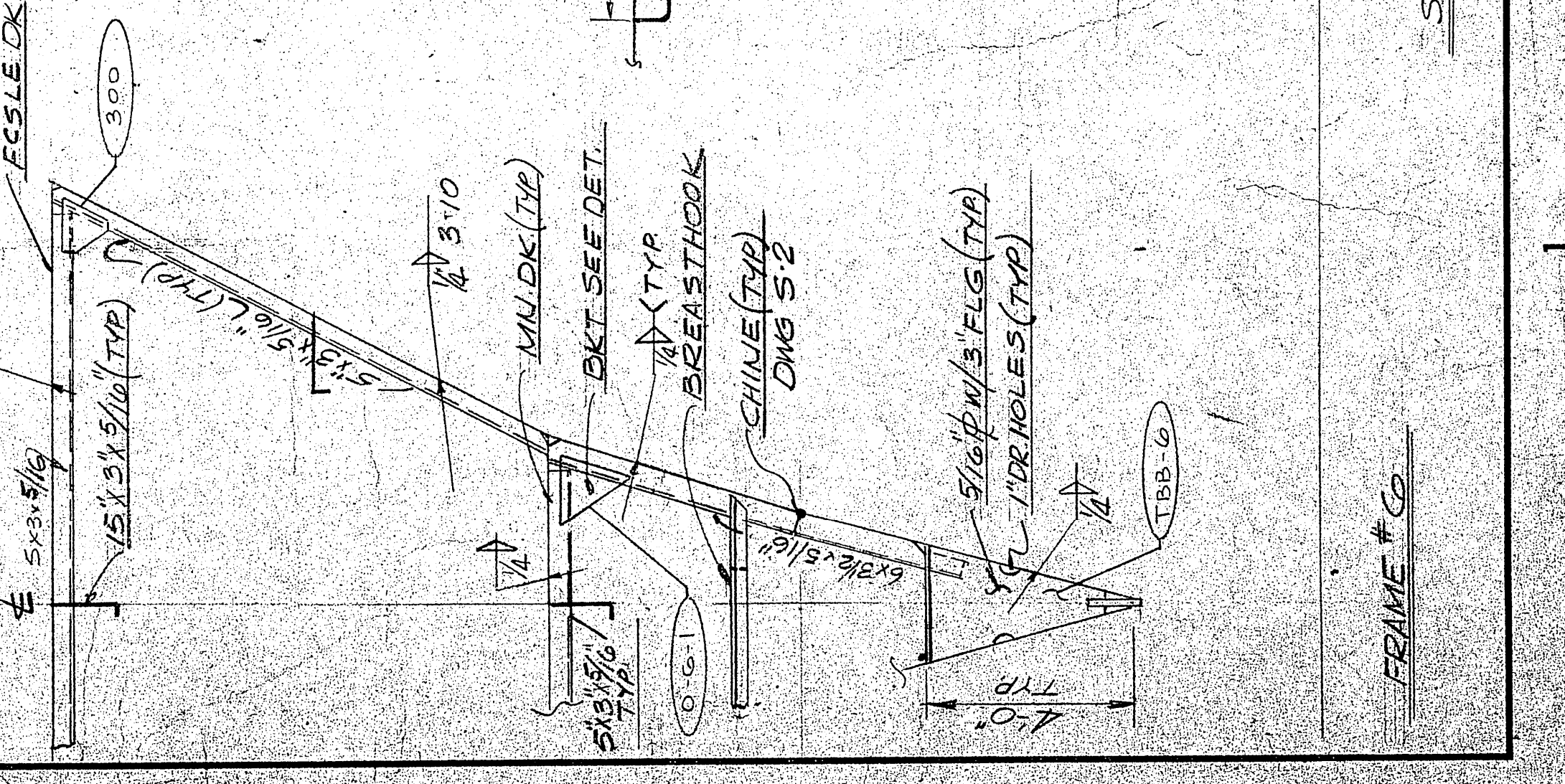
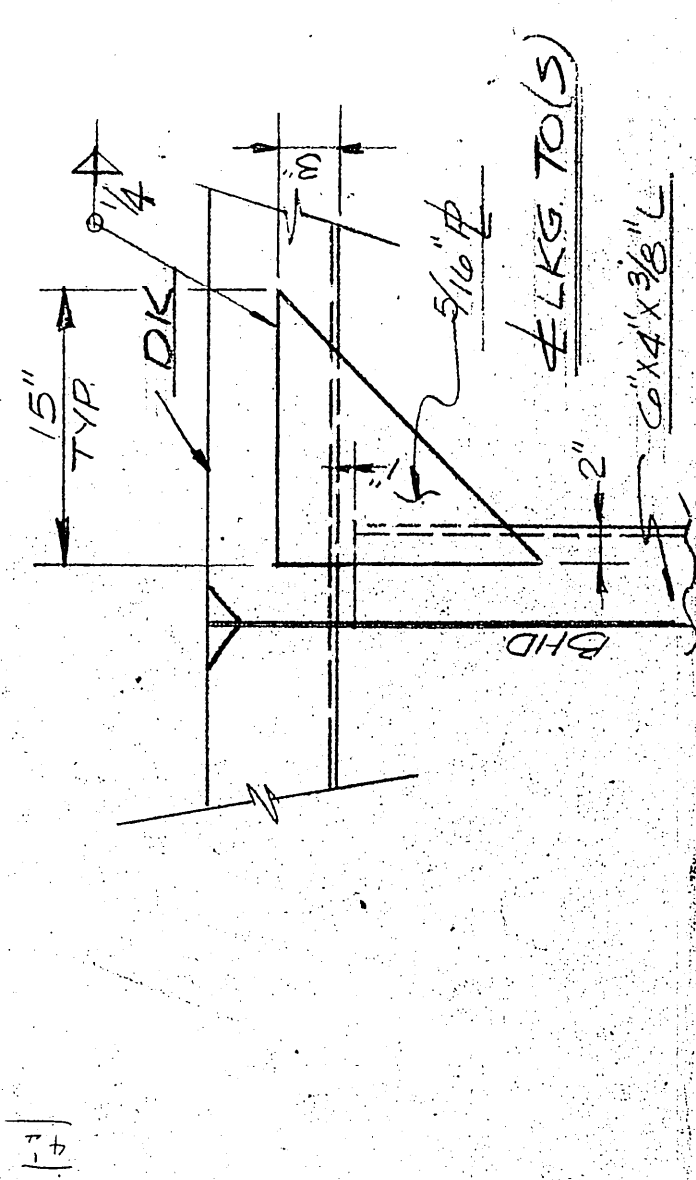


GENERAL NOTES

1. ALL FRAMES ARE VIEWED LKS.AFT.
2. ALL SHIPES TO BE 2% UNLESS NOTED OTHERWISE.



FEB 4 1974

REV	DESCRIPTION	DATE	BY
1	ADD STEELWORK TO BE 2% UNLESS NOTED OTHERWISE.	2/1/74	...
2	ADD P.C. MARKS PER MOD. LOT #...	2/1/74	...
3	REVISIONS		
4	REVISIONS		
5	ADD STEELWORK TO BE 2% UNLESS NOTED OTHERWISE.	2/1/74	...
6	ADDITIONAL WORK AT END TO BE 2% UNLESS NOTED OTHERWISE.	2/1/74	...

OFFICE COPY

U.S. NAVAL SHIP SYSTEMS COMMAND
OCEANOGRAPHIC RESEARCH SHIP
AGOR (UTILITY) CLASS
WASHINGTON D.C. 20380

HALTER MARINE SERVICES, INC.
P.O. BOX 5896 NEW ORLEANS, LA. 70159

FRAMES 0-9

SCALE	DATE	DATE	DATE
3/8" = 1'-0"	8/7/72	8/7/72	8/7/72
DRAWN BY: AEC/...	CHKD BY: ...	DATE: ...	DATE: ...
HALTER JOB NO. 576	HALTER JOB NO. 288	DATE: ...	DATE: ...
NAVSHIPS NO. AGOR 27-101-003	REV. 6		

TRUSSES-GIRDERS #	STRESSES
S20	S20
S23	S23
S2	S2
S1	S1
ONS	ONS
AND	AND

TITLE	REFERENCES
FRAMES 0-9	
FRAMES 10-19	
FRAMES 20-29	
FRAMES 30-39	
FRAMES 40-49	
FRAMES 50-59	
FRAMES 60-69	
FRAMES 70-79	
FRAMES 80-89	
FRAMES 90-99	

TRUSSES-GIRDERS #	STRESSES
S20	S20
S23	S23
S2	S2
S1	S1
ONS	ONS
AND	AND

TITLE	REFERENCES
FRAMES 0-9	
FRAMES 10-19	
FRAMES 20-29	
FRAMES 30-39	
FRAMES 40-49	
FRAMES 50-59	
FRAMES 60-69	
FRAMES 70-79	
FRAMES 80-89	
FRAMES 90-99	

TRUSSES-GIRDERS #	STRESSES
S20	S20
S23	S23
S2	S2
S1	S1
ONS	ONS
AND	AND

TITLE	REFERENCES
FRAMES 0-9	
FRAMES 10-19	
FRAMES 20-29	
FRAMES 30-39	
FRAMES 40-49	
FRAMES 50-59	
FRAMES 60-69	
FRAMES 70-79	
FRAMES 80-89	
FRAMES 90-99	